

## Area 3a

### Legend

#### Lots subject to Planning Proposal

-  OEH objection
-  Atlas Threatened Fauna
-  Atlas Threatened Fauna
-  Swift Parrot habitat
-  EEC
-  Biobank
-  LEP Places of Aboriginal significance



## Area 4 (north)

### Legend

#### Lots subject to Planning Proposal

-  OEH objection
-  Atlas Threatened Fauna
-  Swift Parrot habitat
-  EEC
-  Biobank
-  LEP Places of Aboriginal significance



Area 4 (south)

Nelligen

**Legend**







**Lots subject to Planning Proposal**

- OEH objection
- Atlas Threatened Fauna
- Swift Parrot habitat
- EEC
- Biobank
- LEP Places of Aboriginal significance


Source: Esri, USDA, USGS, Department of Finance, Services & Innovation 2017

## Legend

**Lots subject to Planning Proposal**

-  OEH objection
-  Atlas Threatened Fauna
-  Swift Parrot habitat
-  EEC
-  Biobank
-  LEP Places of Aboriginal significance

## Lots subject to Planning Proposal

 OEH objection



- Atlas Threatened Fauna



 Biobank

LEP Places of Aboriginal significance

Source: Esri, DigitalGlobe, GeoEye, USDA, USGS, AeroGRID, IGN, and the GIS User Community  
 Finance, Services & Innovation 2017



**Area 4c**

**Legend**

**Lots subject to Planning Proposal**

- OEH objection
- Atlas Threatened Fauna
- Swift Parrot habitat
- EEC
- Biobank
- LEP Places of Aboriginal significance







Maloney's Flat

Maloney's Beach

Source: Esri, DeLorme, Garmin, USDA, USGS, AeroGRID, IGN, SIA, User, Esri, Department of Environment, Finance, Services & Innovation 2017

## Legend

**Lots subject to Planning Proposal**

-  OEH objection
-  Atlas Threatened Fauna
-  Swift Parrot habitat
-  EEC
-  Biobank
-  LEP Places of Aboriginal significance

### Lots subject to Planning Proposal

OEH objection



- Atlas Threatened Fauna

 Swift Parrot habitat

EEC



 Biobank



LEP Places of Aboriginal significance



Maloneys Flat

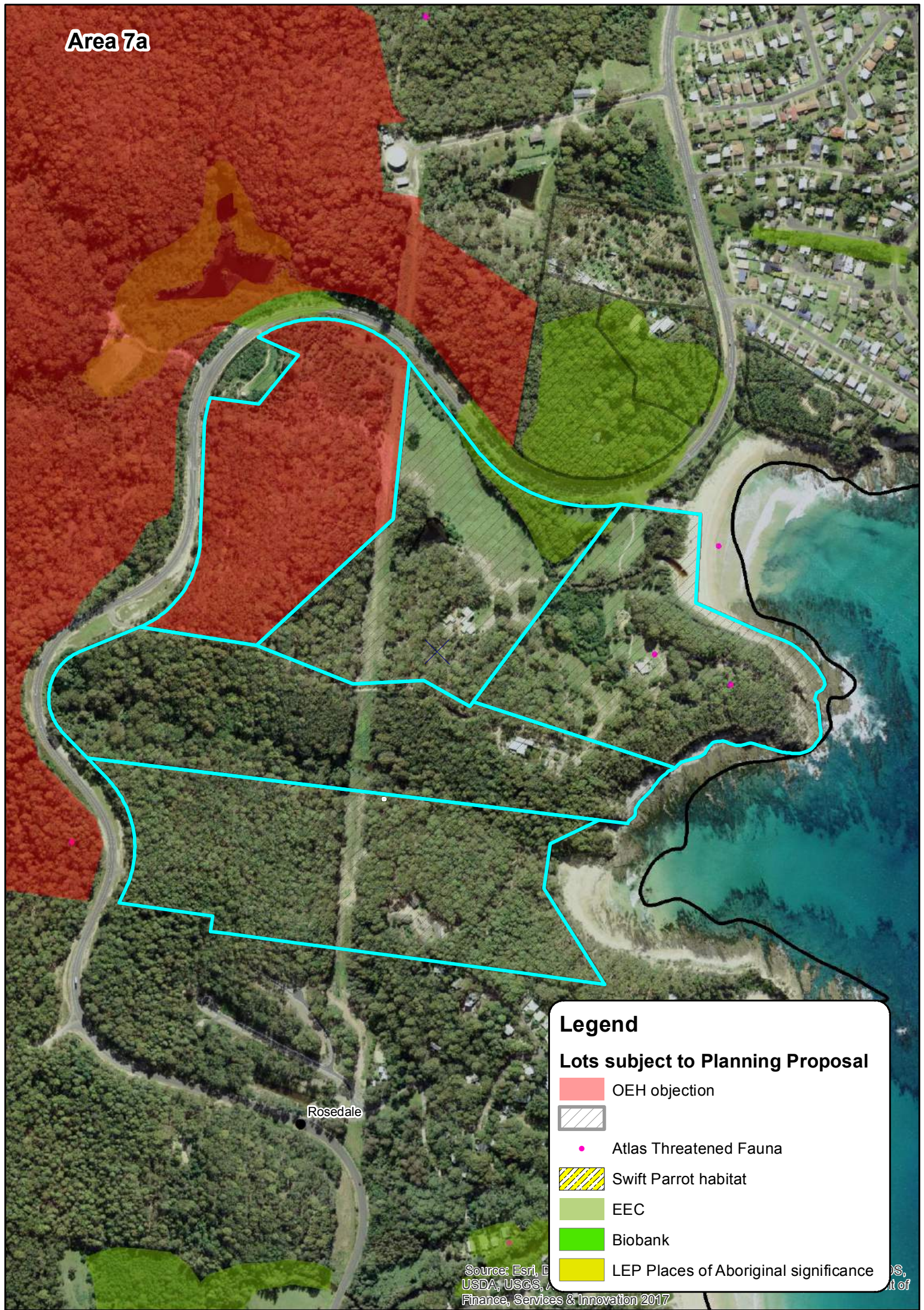


Maloneys Beach

Source: Esri, DigitalGlobe, GeoEye, IGN, Aerimag, USDA, USGS, AeroGRID, IGN, Swayze, Swire, and others. © 2017 Esri and contributors. All rights reserved. LEP Places of Aboriginal significance. Department of Environment and Heritage, Department of Finance, Services & Innovation 2017



## Area 7a



### Legend

#### Lots subject to Planning Proposal

-  OEH objection
-  Atlas Threatened Fauna
-  Swift Parrot habitat
-  EEC
-  Biobank
-  LEP Places of Aboriginal significance



## Area 7b

### Legend

#### Lots subject to Planning Proposal

-  OEH objection
-  Atlas Threatened Fauna
-  Swift Parrot habitat
-  EEC
-  Biobank
-  LEP Places of Aboriginal significance
-  Corridors in Regional Plan

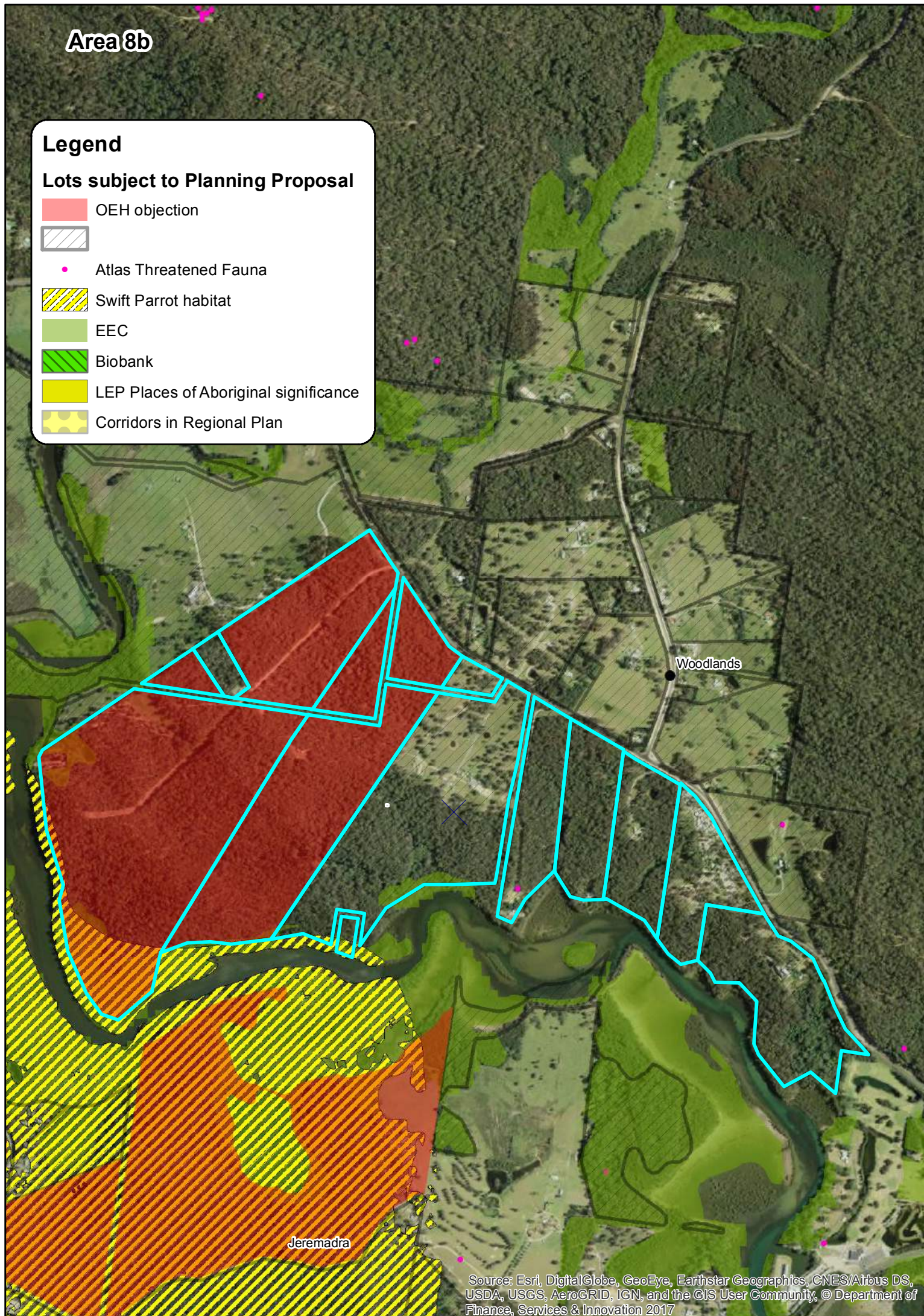


## Area 8b

### Legend

#### Lots subject to Planning Proposal

- OEH objection
- Atlas Threatened Fauna
- Swift Parrot habitat
- EEC
- Biobank
- LEP Places of Aboriginal significance
- Corridors in Regional Plan






## Area 9a

### Legend

#### Lots subject to Planning Proposal

-  OEH objection
-  Atlas Threatened Fauna
-  Swift Parrot habitat
-  EEC
-  Biobank
-  LEP Places of Aboriginal significance
-  Corridors in Regional Plan



## Area 10

### Legend

#### Lots subject to Planning Proposal

- OEH objection
- Atlas Threatened Fauna
- Swift Parrot habitat
- EEC
- Biobank
- LEP Places of Aboriginal significance
- Corridors in Regional Plan

Bir bimbie



## Area 11

### Legend

#### Lots subject to Planning Proposal

- OEH objection
- Atlas Threatened Fauna
- Swift Parrot habitat
- EEC
- Biobank
- LEP Places of Aboriginal significance
- Corridors in Regional Plan