



Coastwatchers

Eurobodalla's voice for nature

Environmental Protection Agency
info@environment.nsw.gov.au

cc: Justin Field, EDO, Brooman State Forest Conservation Group

12 October 2020

Dear EPA

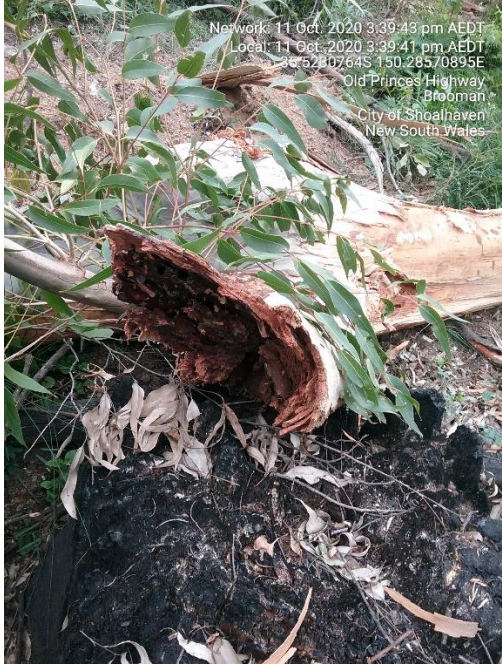

Coastwatchers is writing to report Forestry Corporation NSW (FCNSW) and contractors regarding the following actions in South Brooman State Forest Compartments 58A (Eden Region) to be investigated and prosecuted as relevant by the EPA. A Stop Work order must immediately be reimposed as the operation is non-compliant with legislation.

The provided information was documented on Sunday 11 October 2020 when there was no operating machinery so this sample survey was conducted out of operating hours. This was in the area that logging resumed around Fri 9 October and Saturday 10 October between log dumps 9 and 7 (see harvest plan map extract below). Not all the cut down trees were inspected.

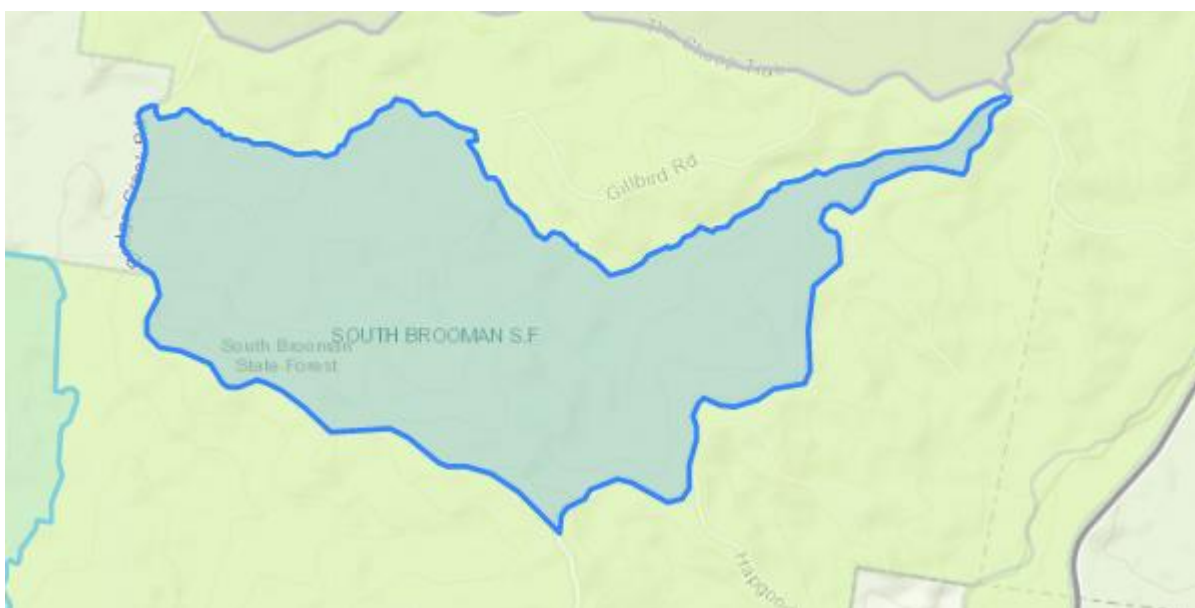
Please see table below of timestamped photos with cords of the trees

These allegedly illegal actions consist of two hollow bearing trees cut down. In addition three termite mounds were smashed along Old Princes Highway (already reported Ref No C15094-2020).

Cpt 58A- HBT Tree 1 with two hollows cut down.	
<p>Hollow is in the burnt out piece and would have been detectable with the FCNSW drone.</p>	<p>This big hollow would have been detectable from the ground.</p>
<p>Coords 35.52206806S 150.28502983E</p>	<p>Coords 35.52212231S 150.28503062E</p>

<p>2. Cpt 58A- HBT Tree 2 with large hollow cut down.</p>	<p>3. Termite mounds smashed along Old Princes Highway</p>
 <p>Network: 11 Oct. 2020 3:39:43 pm AEDT Local: 11 Oct. 2020 3:39:41 pm AEDT 35.5230764S 150.28570895E Old Princes Highway Brooman City of Shoalhaven New South Wales</p>	 <p>Network: 11 Oct. 2020 2:35:06 pm AEDT Local: 11 Oct. 2020 2:35:05 pm AEDT 35.5195527S 150.29202692E Old Princes Highway Brooman City of Shoalhaven New South Wales</p>
<p>Big hollow was smashed when the tree was felled</p>	<p>One of three termite mounds smashed day after logging started on Old Princes Highway – already reported.</p> <p>Ref No C15094-2020</p>
<p>Coords 35.5230764S 150.28570895E</p>	<p>Coords 35.5195527S 150.29202692E</p>

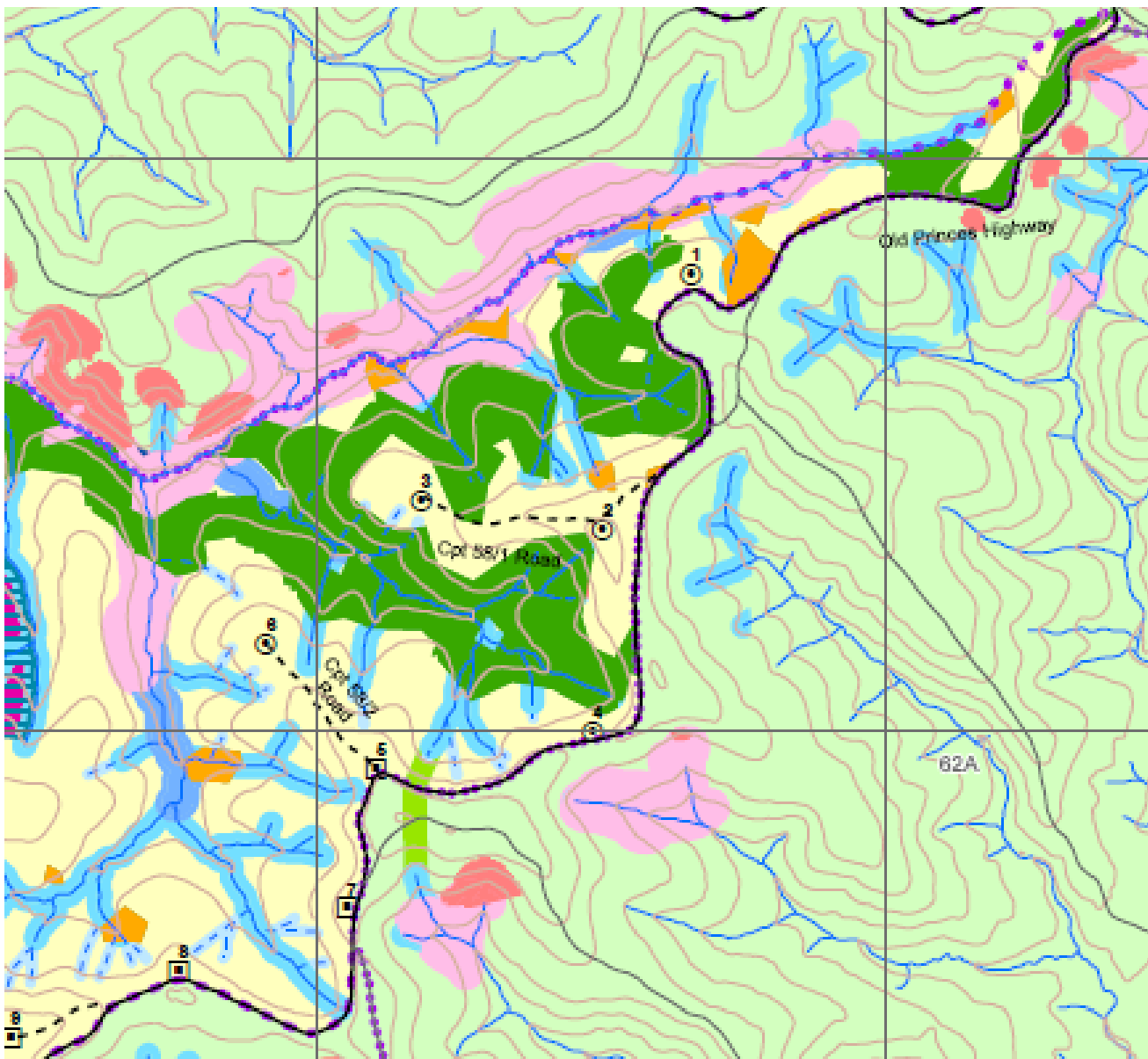
4. Coastwatchers notes this logging that commenced on approx Friday 9 October was undertaken while the status of the logging operation was suspended on the FCNSW portal. Stakeholders viewing the portal assume the operation is suspended when in fact trees were being harvested. Map in blue below from <https://planportal.fcnsw.net/> on Monday 12 October denotes suspended status for Compartment 58A. Please investigate this as potentially being illegal.



5. Also resident's safety is at risk as they observe suspended status when it is in fact active. Also tourists travelling from Shallow Crossing to the Princes Highway to travel north, on the third last day of the school holidays

are subject to road closures and the danger of loaded logging trucks on dirt roads. Three 4WDs with caravans travelled past on Sunday 11 October 2020.

The operation at Compartment 58A will be systematically checked for compliance every week and reported to the EPA. The remaining area of the compartment 58A must not be logged as it is mainly unburnt canopy (see green area on map below) acting as wildlife refugia. It is critical wildlife surviving in unburnt canopy such as this, not be subject to logging which is a key threatening process and survive to repopulate the million hectares of burnt forest.



Yours sincerely

Secretary - Coastwatchers Association