



Coastwatchers

Eurobodalla's voice for nature

Environmental Protection Agency
info@environment.nsw.gov.au

cc: Justin Field, EDO, Brooman State Forest Conservation Group, Peter Hannam SMH.

19 October 2020

31 Trees with Hollows to Remain Standing around active logging Cpt Rd 58/2 South Brooman

Dear EPA

Coastwatchers is writing in relation to Forestry Corporation NSW (FCNSW) and contractors operating in South Brooman State Forest Compartments 58A. This follows up Coastwatcher's previous letter dated 12 October requesting two trees with hollows that were cut down between log dumps 9 and 7. I appreciate Carly phoning me today to advise two staff checked the three hollows reported but did not assess them as non-compliant.

To further assist the EPA, attached is an export file (csv format from Avenza map pins) of coords of trees with hollows documented while they were still upright. As these are in an active logging area, I am requesting the EPA check if these trees are still standing. All these trees have sets of photos of the trunk, tree top and hollow while the tree was standing – see hollow photo from Tree 2 below. It is noted that FCNSW have since marked some of these trees with an H, although when most of these trees were documented (7 and 8 July) many of these were not marked with a FCNSW spraypainted H. It is assumed they were digitally recorded on the FC Map App. If not marked by FCNSW, as it is unlikely contractors get out of their harvestors to check trees for hollows, they are likely to have been cut down, contravening the Bushfire Affected Operations site specific operating conditions that all trees with hollows are to be retained.

1. Coords for 31 trees with hollows documented around Compartment 58/2 Road. This is where logging is currently being undertaken.
2. Coords for five trees with hollows documented between log dump 9 and 7 to support the previous letter dated 12 October. Also the giant tree marked by FCNSW should be checked if still standing.

Can you advise if FCNSW are checking that every tree marked as Habitat tree is still standing to provide quality control of their own operation?

A shape file may be able to be provided with the photos for each pin for each tree this week using Avenza Pro.



Hollow Bearing Tree 2 next to Cpt 58/2 road currently being logged.

The Coastwatchers Association Inc.
PO Box 521
Batemans Bay NSW 2536

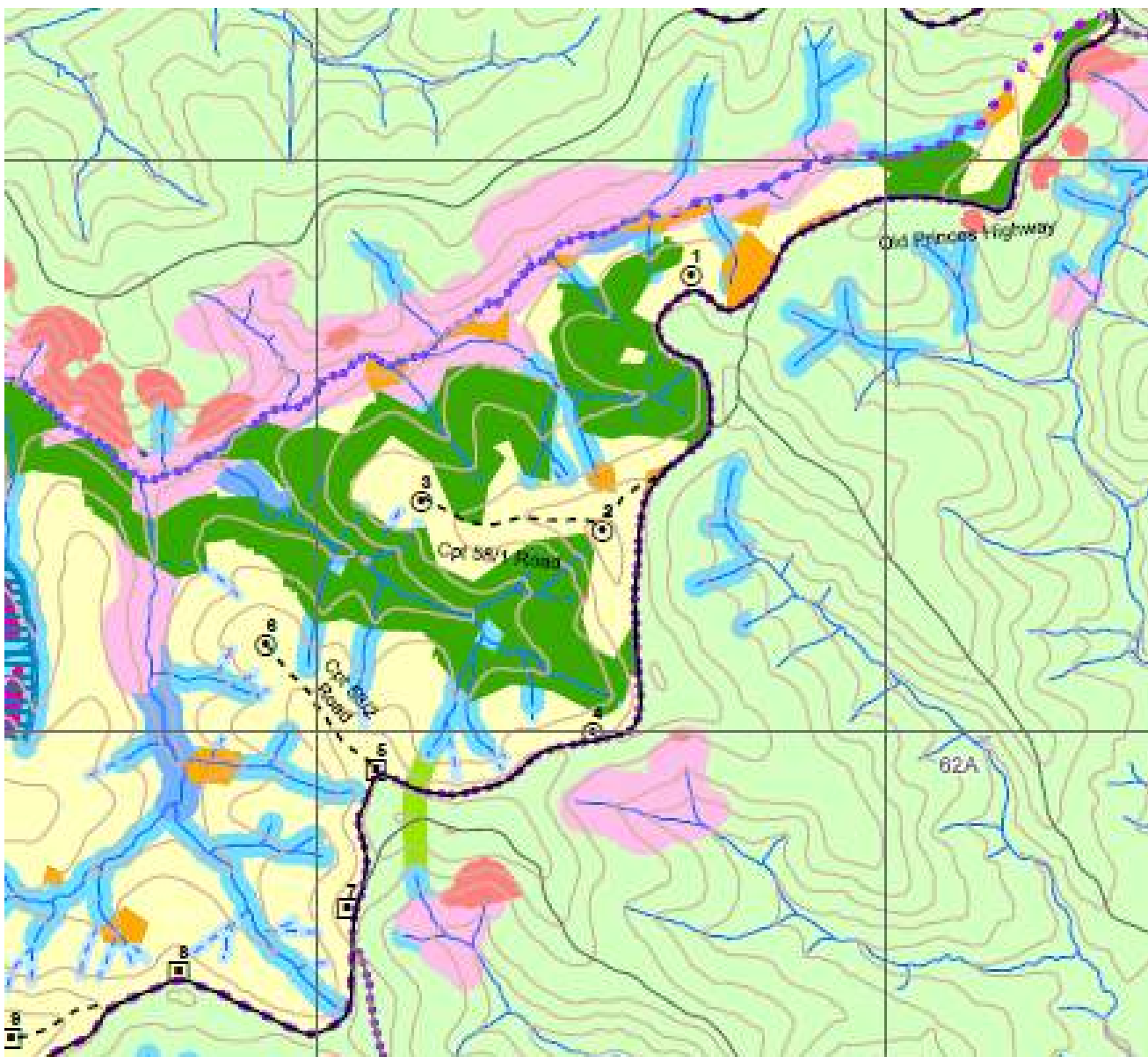
ABN 66 003 550 939
contact@coastwatchers.org.au
www.coastwatchers.org.au

Please can the EPA investigate if any of these trees have been cut down. If so, can prosecutions as relevant be followed up and the Stop Work order immediately be reimposed as the operation is non-compliant with legislation.

The remaining area of the compartment 58A must not be logged as it is mainly unburnt canopy (see green area on map below) acting as wildlife refugia. It is critical wildlife surviving in unburnt canopy such as this, not be subject to logging which is a key threatening process and survive to repopulate the million hectares of burnt forest. Can a layer of all the H trees be provided of the remaining area to be logged in compartment 58A to see how many have been marked for protection.

I saw a spotted quoll leave the Sheep Track (it was eating something squashed into the dirt road by a car) and return to Compartment 59 on the evening of 15 October so Bridge Creek is a vital wildlife refugia to repopulate the rest of the very badly burnt areas.

Of course every single one of these trees will be checked by the community in the future.



Yours sincerely

Joslyn van der Moolen Secretary - Coastwatchers Association