

# ***Worth More Standing\****

***Environment and Eco-tourism***



***Coastwatchers***  
*Eurobodalla's voice for nature*

# ***Overview...***

## **Environmental Issues:**

1. Logging and Flooding - Case Study: Mogo town
2. Threatened Species habitat degradation  
Case Study: Mogo State Forest compartment 146

## **Eco-tourism Opportunities:**

1. Mountain biking
2. Avitourism (Birdwatching)
3. Giant tree tourism

In December 2021 and again in March 2022 flooding incapacitated the town of Mogo and blocked highway number one.

The community rallied around to help the businesses cope at the time.

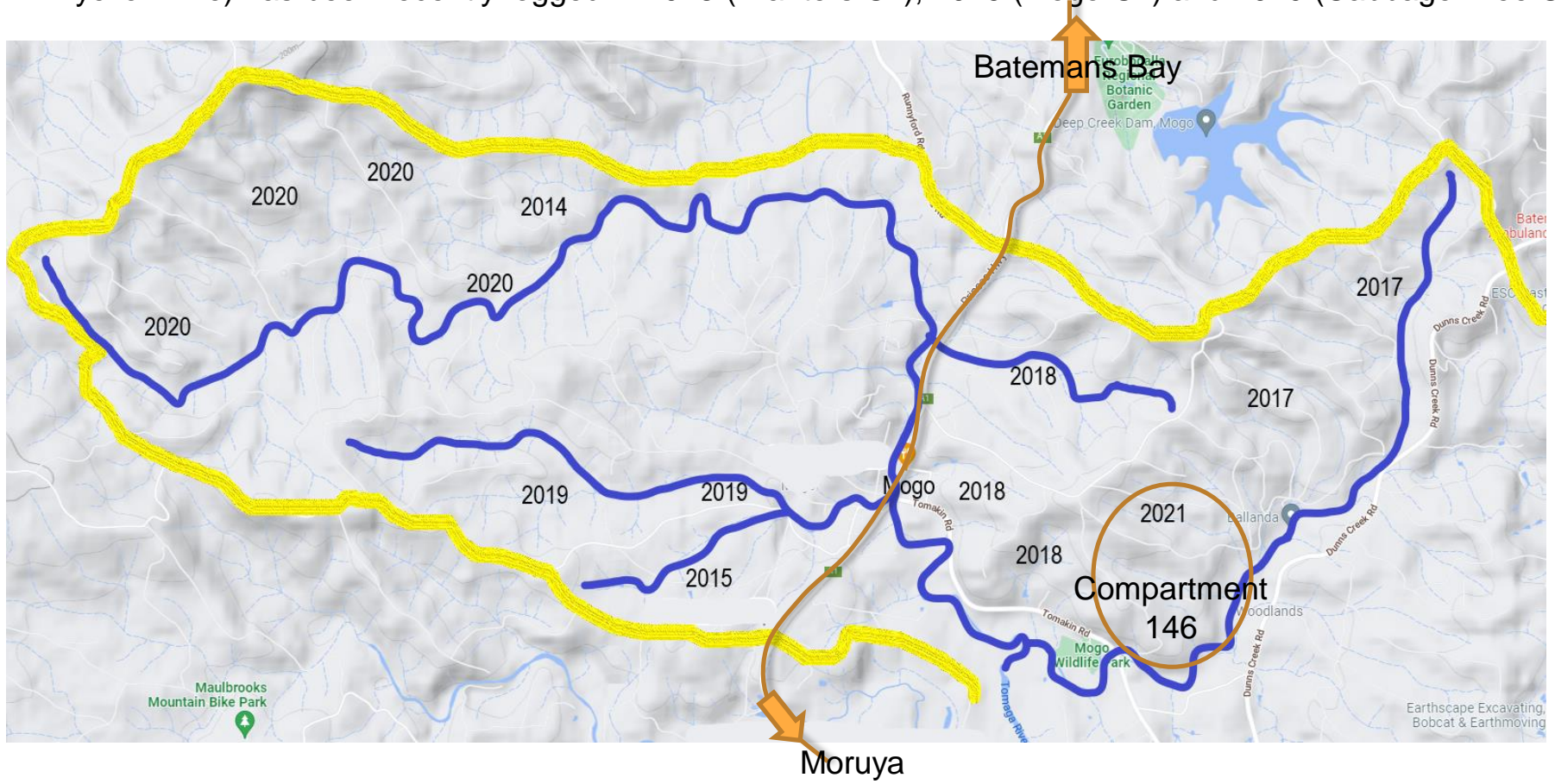
But was there a relationship between the amount of recent logging in the catchment and the severity of the flooding?





## Logging and flooding

This is the catchment of Mogo Creek with water courses indicated by the blue lines and the years when logging occurred in particular parts of the catchment. Note that much of the catchment of Mogo Creek (bounded by the yellow line) has been recently logged in 2018 (Transters Ck), 2019 (Mogo Ck) and 2020 (Cabbage Tree Ck)



Logging increases the erosive effect of rain falling onto the land. The logged forests have reduced tree canopy and disturbed soils. This increases the impact of the rain. The resulting increased sediment runoff then silts up the streams and seriously reduces the ability of the flowing water to stay within its stream banks.

Photo: Example of sediment run-off from a forestry operation which attracted a \$30,000 fine



# Threatened Species Habitat Degradation

## Case Study: Mogo State Forest compartment 146

- Greater Gliders: our largest tree dwelling mammal



Already in decline due to logging,  
they were decimated by the fires  
of Black Summer



We know from the official government wildlife database that all kinds of threatened species live in or visit this forest Forestry Corporation confirmed this in May 2021 when it spotlighted Greater Gliders and Yellow Bellied Gliders.

**Den trees** are where animals return to spend the daylight hours. Glider den trees are critical for the survival of this species and would be protected however Forestry were unable to locate them. So logging commenced with Forestry Corp taking the risk that the trees being felled weren't den trees.

On a related matter **8 hollow bearing trees** are meant to be retained per hectare. However for any wildlife sheltering other hollow bearing trees it is too bad. They die in situ as the tree hits the ground.



Over 140  
native  
animals are  
“hollow  
dependent”.  
The Powerful  
Owl is one  
such species





# Hollow Bearing Trees

- Photo of a felled hollow bearing tree (HBT) in compartment 146 in 2022
- Note the photo is geo-tagged to 6 decimal places for verification purposes
- Forestry Corp was fined \$45,000 in Dec 2021 for felling HBTs in Mogo State Forest



## Gang-gang cockatoo conservation project

Broulee community information session



Join in, collaborate and learn about a local gang-gang cockatoo nesting tube project – one of only two in Australia.

Gang-gang cockatoos are listed as an endangered species due to habitat loss.

The project is trialling 'cockatubes' to see if they might prove helpful in conserving one of Australia's most iconic birds.

Project collaborator conservation scientist, Dr Susan Rhind, and Council's environment team will tell you about gang-gangs and how each person can play a part in their conservation.

You will have an opportunity to get some ideas about how to make your garden or rural property more gang-gang friendly.

### Session details

**When** Wednesday 25 May 2022, 7-8pm.

**Where** Broulee Public School hall,  
Cambridge Crescent, Broulee.

**RSVP** No RSVP is required.

### More information

Contact Eurobodalla Council's natural resource supervisor Courtney Fink-Downes on 0427 401 036.

# Endangered birdlife habitat logged

- Terrific Council initiative to save Gang Gangs
- Gang Gangs were officially declared endangered in early May 2022
- Despite 2 new sightings of the birds in Mogo cpt 146, logging their habitat continued.

Eurobodalla Shire Council May 2022

W [www.esc.nsw.gov.au](http://www.esc.nsw.gov.au)  
E [council@esc.nsw.gov.au](mailto:council@esc.nsw.gov.au)  
T 4474 1000

 eurobodalla  
shire council

# Dripping with Irony

a personal story from a local conservationist

- One tragic irony is that the location of one of these Gang Gang sightings is only 500 m from the zoo where captive breeding programmes assist in reversing the extinction crisis of various exotic animals.
- “One day I was standing in a recently logged part of the forest. I could hear the stirring sounds of the beautiful Siamang Gibbons doing their morning vocalising. This animal is critically endangered due to habitat destruction in Indonesia and yet here we are knowingly destroying the documented habitat of our OWN endangered animals.”



# Critically Endangered Swift Parrots



Estimated  
date of  
extinction:  
+/-2030

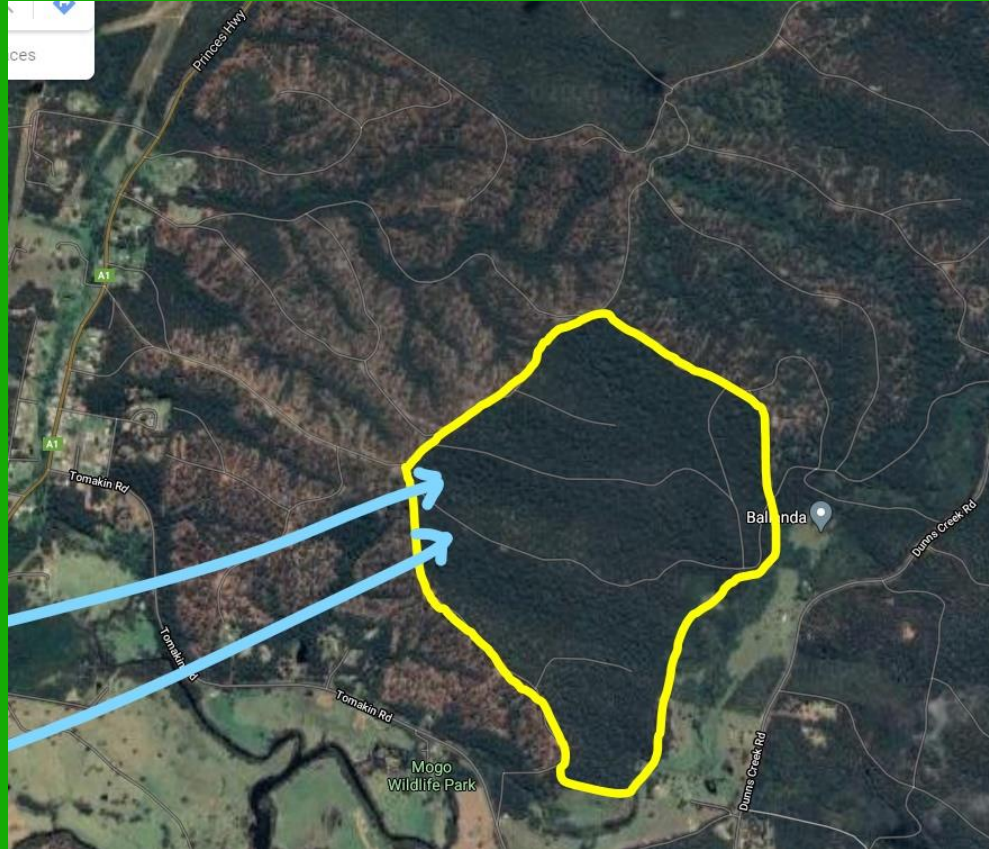
- Nationally listed as critically endangered in 2016 and still in decline today

# Swift Parrot Records in 146

This aerial shot prior to logging of the compartment shows the location of the Swift Parrot records.

150

30



Note condition of the surrounding forest after logging and imagine the lack of food resources there for any fauna, not just the Swifties

## Swift Parrots (continued)

- They rely heavily on the flowering eucalypts of the South Coast as their prime winter food resource.
- Eurobodalla Shire lies in the heart of the Key Biodiversity Area (KBA) stretching from Milton to Merimbula in recognition of the critically endangered status of the Swift Parrot and the Regent Honeyeater.
- Despite the perilous status of the Swift Parrot logging their food resource is considered “legal”.



# *How much is tourism worth to Eurobodalla?*

- “Eurobodalla welcomes 1.2 million visitors a year.



Directly employs  
1423 people  
Indirectly employs  
841 people.

Source: ESC website

- In 2019/20 tourism and hospitality sales were over \$288 million”

***Nature based tourism is expanding as more people discover the value of nature as a balm to the pressures of modern living.***



**An end to local native forest logging would dovetail perfectly with the Eurobodalla Destination Action Plan**



# *Logging jeopardises tourism*

*This is not what tourists  
want to see.*

*This can hardly be branded  
as the  
“Nature Coast” or  
“All Things Natural”*

Behind the façade:

Benandarah State Forest  
post logging  
(Clyde estuary in b'ground):

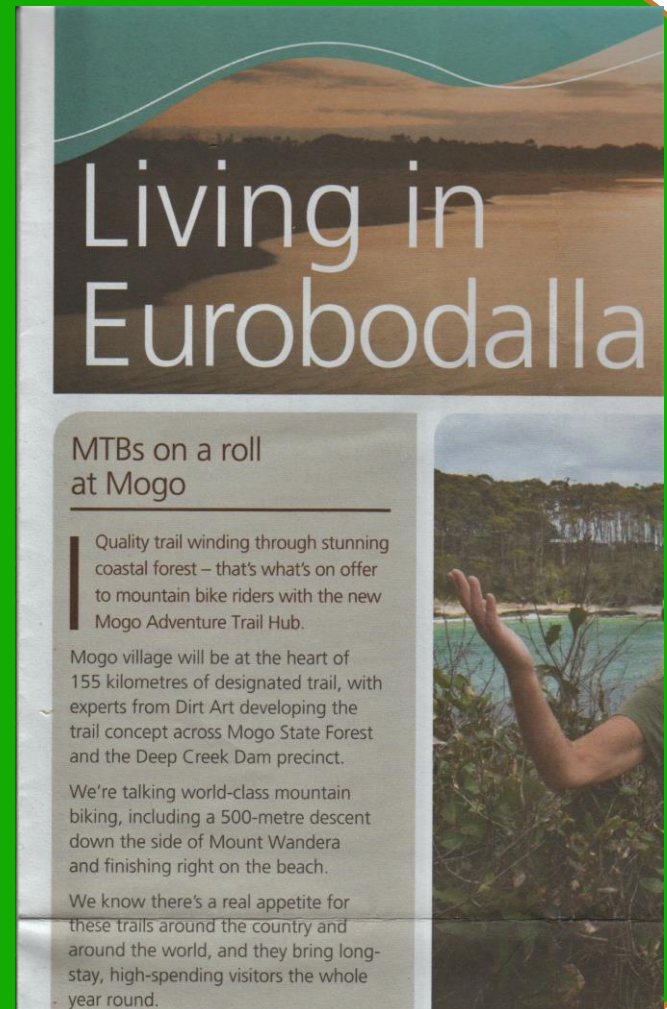




# *Eco-Tourism opportunities*

## 1. Mountain biking

- Over \$16 million for 2 Adventure Trails Hubs at Mogo and Bodalla State Forests.
- Eurobodalla can be destination of choice for domestic & international mtn bikers IF forests stay natural.



Source: Jan-March 2021 Living in Eurobodalla

This email from Rex Airlines is already promoting Mogo mountain biking. Note the highlighted sentence at the bottom. This type of synergy with the industry is what can happen if we play our cards right.

Sat 17/06/2022 9:43 AM

Rex Promotions <promotions@edm.rex.com.au>

✈ Regional flights on sale – Sydney to Moruya \$119\*

activ8.net.au

problems with how this message is displayed, click here to view it in a web browser.

Baggage and refreshments included.

reX.PromoMail



**Fly Sydney to Moruya from \$119\***

Get off the beaten track (literally) and mountain bike through Mogo State Forest!



# But logging sabotages mountain biking projects

- Site of proposed mountain biking track linking Mogo with Deep Ck Dam
- Forestry Corp. reserves legal right to log in any state forest it chooses





# Existing mountain bike tracks wrecked

This was an existing track within the footprint of the proposed Mogo Adventure Trails Hub. No attempt was made by Forestry Corp. to rectify the track after logging was completed in 2021.

The same thing happened at Dunns Creek where the Joan of Arc Trail still remains unremediated and unusable 5 years later.

Where else can we look for an example of logging and mountain biking in conflict?



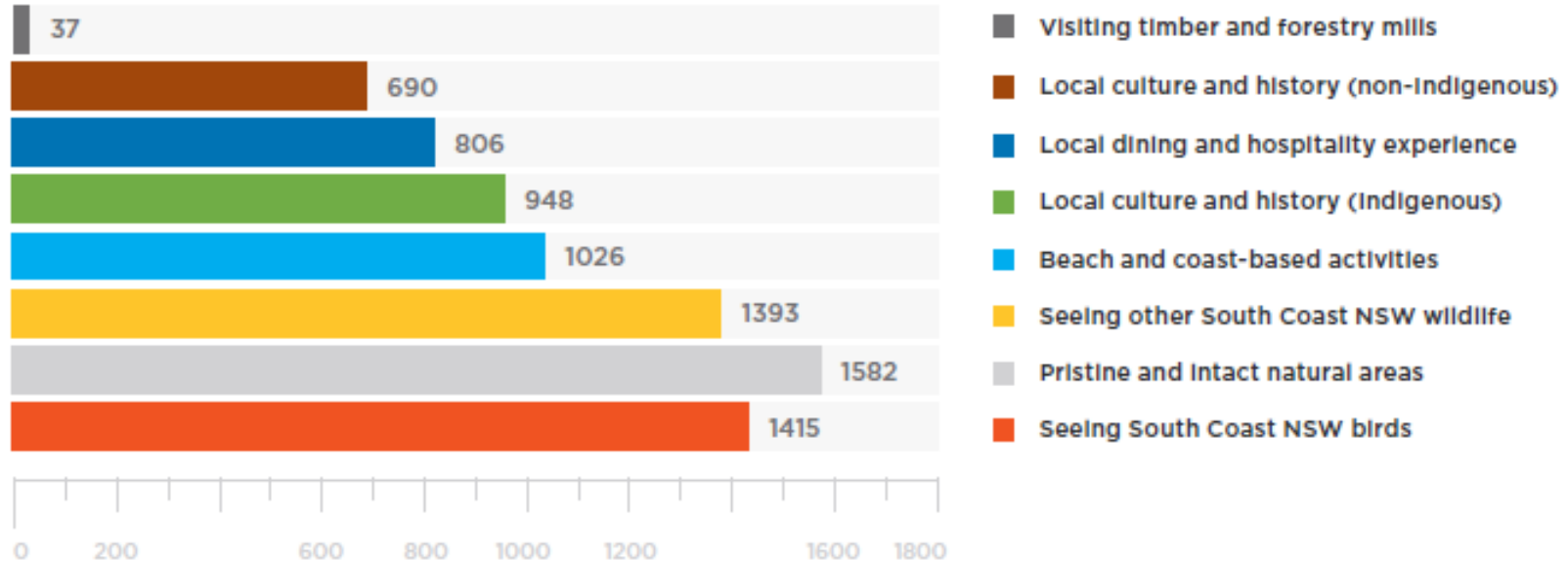


## The Derby Experience

- Derby: became mountain bike capital of Tasmania.
- 32,000 petition signatories called for an end to logging(Nov 2021)
- 180 businesses signed open letter to Tasmanian Premier calling for halt to logging around Derby (March 2022)
- Tasmania's Supreme Court issued an injunction on all logging in the area. (May '22)

# Eco-tourism Opportunities

## 2. Avitourism (Birdwatching)



**Figure 23.** Drawcard destination attributes for previous visitors to NSW South Coast  
(n = 1794)

Of 1794 respondents the majority were coming to see birdlife, intact natural areas and wildlife – that's all ecotourism



# *Eco-Tourism Opportunities*

## 3. Giant Tree Tourism



- NZ Giant Kauri trees are marketed around the world

With proper visitor infrastructure Tana Mahuta has become a major earner of tourist dollars for the shire of Northland and for the country

- Huge Spotted Gums in our local forests can underpin a Giant Tree tourism sector
- This is possibly the tallest Spotted Gum in the world. It stands unprotected in a local state forest.





# CONCLUSION

*Public native forests  
ARE  
worth more standing*

*Local Government  
CAN play a part...*

*Vote to advocate for  
an end to native  
forest logging*



**Coastwatchers**

*Eurobodalla's voice for nature*

This slide show was made on the lands of the Walbanga people of the Yuin nation. Respects are paid to their elders past present and emerging. Until we start to think of OURSELVES as custodians of this land we will continue to do a disservice not only to these ecosystems but also to the 1<sup>st</sup> nations peoples who have carefully looked after this Country for thousands of years.

\*Worth More Standing is the name of the campaign launched in 2022 by the NSW Nature Conservation Council to promote alternatives to native forest logging.